

FLUID HANDLING

Filter Cart

A portable, offline filtration system that's ideal for mineral-based industrial fluids and a wide range of applications.



Overview

The Filter Cart:

Where It's Used

- Decontaminating systems
- Flushing new or repaired systems
- Dispensing oil
- Pre-filtering new oil
- Evacuating used oil
- Topping off reservoirs
- Collecting oil samples for analysis

What Is Standard?

- Automatic pressure relief valve
- Dual-stage filtration
- 12' hose assemblies with various quick connect options
- Pneumatic wheels for easy mobility
- Industrial powder-coated paint
- Heavy-duty cart with oil catch pan
- One-year warranty

What Can I Customize?

- Flow rates
- Filter bypass
- Sample valves
- Y-strainer
- Connection sizes
- Color
- Hose-end connection sizes and types
- Micron rating of filters

Performance

For filtering mineral-based industrial oils and most synthetic oils with a maximum operating viscosity range of ISO VG 680 (3000ssu/648cSt) at 100°F/38°C within ambient temperature ranges of -15°F to 150°F (-26°C to 66°C)

Materials:

- Frame: Carbon steel
- Paint: Industrial powder coat
- Filter Heads: Aluminum
- Fittings: Zinc-plated steel and/or brass
- Pumps: Aluminum/steel
- Hoses: Clear PVC with steel wire or hydraulic hose
- Gaskets: Buna-N

Filter Indicators:

- Filter indicator pops at 22psid (1.55bar) as warning that filter elements need to be replaced

Pump Relief:

- Opens at 65psi

Weight:

- Approximately 100-150lbs (will vary depending on options selected)

Dimensions:

- 18.8"L x 21.5"W x 46.4"H

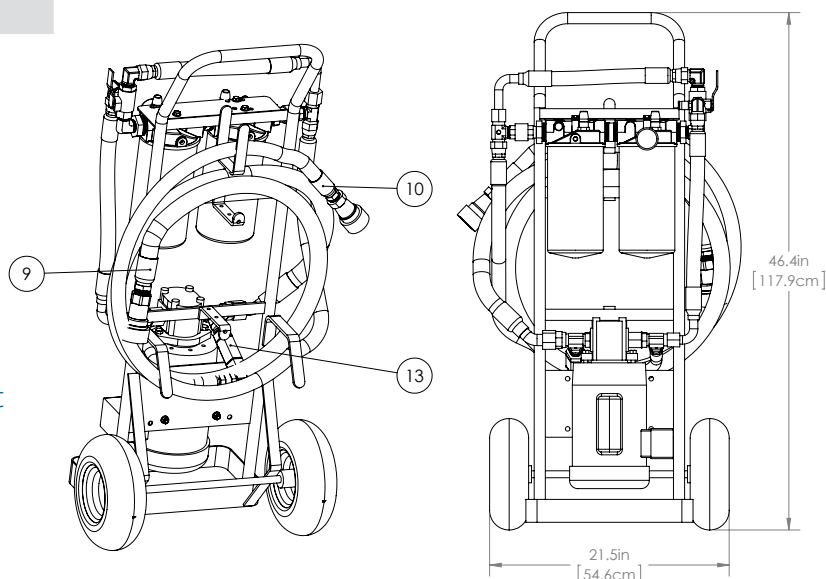
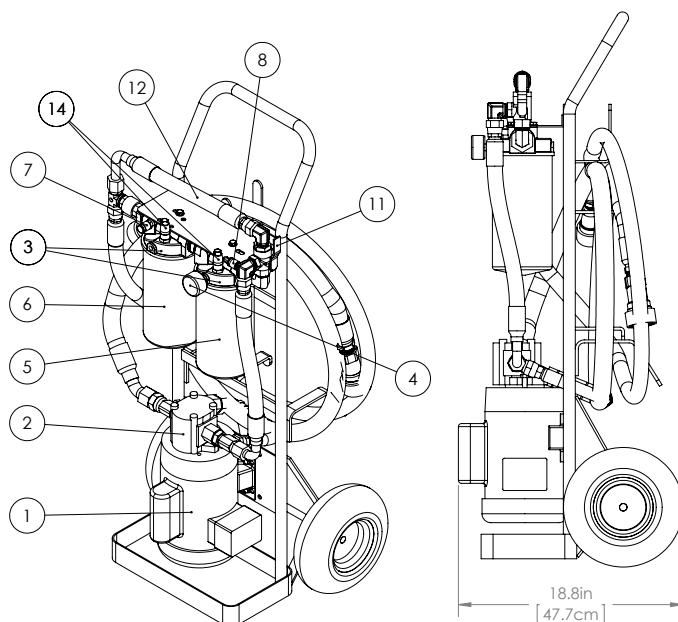
Call Des-Case for the Following Needs:

- CE certification
- Explosion-proof
- Wands
- Threaded end connectors
- Particle counters
- Hydraulic hoses
- Viton® gaskets
- High viscosity push button sample valves

Specifications

By the Numbers:

| Item No. | Description | Qty. |
|----------|----------------------------|------|
| 1 | Motor | 1 |
| 2 | Gear Pump | 1 |
| 3 | Filter Head | 2 |
| 4 | Pressure Gauge | 1 |
| 5 | Filter Element A | 1 |
| 6 | Filter Element B | 1 |
| 7 | Post-Filter Sample Valve | 1 |
| 8 | Pre-Filter Sample Valve | 1 |
| 9 | 25' Cord | 1 |
| 10 | 12' Suction Hose | 1 |
| 11 | 12' Pressure Hose | 1 |
| 12 | Manual Filter Bypass Valve | 1 |
| 13 | Filter Bypass | 1 |
| 14 | Pump Relief-65psi | 1 |
| 15 | Filter Change Indicator | 1 |



Did You Know?

The filter cart pairs perfectly with Des-Case's tote, drum, hydraulic, gearbox, and drain port adapter kits. Customize your mating kit at www.descase.com.

To Order: Filter Cart

| | | | | | | | | | | |
|----|-------|-------|-------|-------|-------|-------|-------|-------|-------|--------|
| FC | | | | | | | | | | |
| | Box 1 | Box 2 | Box 3 | Box 4 | Box 5 | Box 6 | Box 7 | Box 8 | Box 9 | Box 10 |

Pump/Motor Combinations [Box 1]

| 60 Hz Options | | 50 Hz Options | |
|---------------|--|---------------|--|
| Code | Description | Code | Description |
| 02E | 2gpm/1 hp electric, 115 vac, 60 Hz, 1725 rpms, 13 amps | 02G | 1.5gpm/1 hp electric, 110 vac, 50 Hz, 1425 rpms, 12.4 amps |
| 05E | 5gpm/1 hp electric, 115 vac, 60 Hz, 1725 rpms, 13 amps | 05G | 4gpm/1 hp electric, 110 vac, 50 Hz, 1425 rpms, 12.4 amps |
| 10E | 10 gpm/1 hp electric, 115 vac, 60 Hz, 1725 rpms, 13 amps | 10G | 8gpm/1 hp electric, 110 vac, 50 Hz, 1425 rpms, 12.4 amps |
| 02F | 2gpm/1 hp electric, 230 vac, 60 Hz, 1725 rpms, 6.5 amps | 02H | 1.5gpm/1 hp electric, 220 vac, 50 Hz, 1425 rpms, 6.2 amps |
| 05F | 5gpm/1 hp electric, 230 vac, 60 Hz, 1725 rpms, 6.5 amps | 05H | 4gpm/1 hp electric, 220 vac, 50 Hz, 1425 rpms, 6.2 amps |
| 10F | 10gpm/1 hp electric, 230 vac, 60 Hz, 1725 rpms, 6.5 amps | 10H | 8gpm/1 hp electric, 220 vac, 50 Hz, 1425 rpms, 6.2 amps |

| Pneumatic Options | | Pneumatic Options | |
|-------------------|------------------------------|-------------------|------------------------------|
| 02A | 2gpm/1.7 hp air, 0-3000 rpms | 08A | 8gpm/1.7 hp air, 0-3000 rpms |

NOTE: Performance will vary depending on operating temperature, fluid type, and unit options. 65psi pressure relief valve included.

Drain & Fill Connector Type [Box 2]

| Code | Description |
|------|---------------------------|
| B | ISO B Connector |
| A | ISO A Connector |
| F | Flush Face Connector |
| R | ISO B Connector-BSPP |
| Q | ISO A Connector-BSPP |
| P | Flush Face Connector-BSPP |

NOTE: All connectors are coupler ends (female)

Filter A [Box 4]/Filter B [Box 5]

| Code | Description |
|------|------------------------------|
| A | 5-micron Particulate Filter |
| B | 7-micron Particulate Filter |
| C | 12-micron Particulate Filter |
| D | 22-micron Particulate Filter |
| J | Water Filter |

Drain & Fill Sizing [Box 3]

| Code | Description |
|------|---|
| 1 | Drain: 1" hose & connection Fill: ¾" hose & connection |
| 2 | Drain: ¾" hose & connection Fill: ½" hose & connection |

NOTE: Units are built for optimum performance when using 1" (drain) and ¾" (fill) connections. Decrease in performance may occur when selecting other size combinations. Hoses are 1" and ¾" respectively regardless of connection sizes.

Manual Filter Bypass [Box 6]

| Code | Description |
|------|---------------|
| 0 | None |
| B | Filter Bypass |

Sample Valves [Box 7]

| Code | Description |
|------|----------------|
| 0 | None |
| 1 | Standard |
| 2 | High Viscosity |

Options 8 through 10 continued on reverse

To Order: Filter Cart

Cord [Box 8]

| Code | Description |
|------|-------------|
| 0 | None* |
| C | 25' cord |

*Comes with the standard cord or no cord for pneumatic/air systems

Y-Strainer [Box 9]

| Code | Description |
|------|-------------|
| 0 | None |
| Y | Y-Strainer |

Custom Colors [Box 10]

| Code | Description |
|------|------------------|
| 1 | Brushed Aluminum |
| 2 | Black |
| 3 | White |
| 4 | Blue |
| 5 | Red |
| 6 | Yellow |

Replace Your Elements

| Part No. | Micron Rating |
|-----------------|------------------|
| DC-S10000S08BBU | Beta 1000 @ 5um |
| DC-S10000S08CBU | Beta 1000 @ 7um |
| DC-S10000S08EBU | Beta 1000 @ 12um |
| DC-S10000S08FBU | Beta 1000 @ 22um |
| DC-S10000W08FBU | Water Removal |

NOTE: Other micron sizes available upon request

You also can customize your system online at www.descase.com.